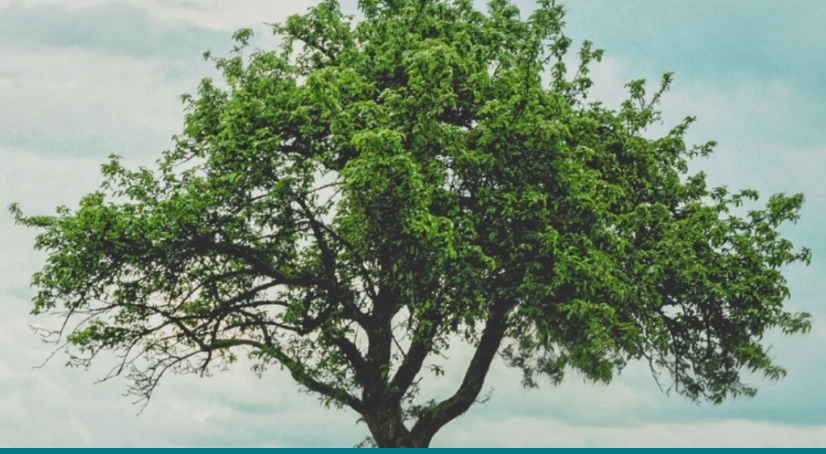




LEAD
PROFESSIONAL
DEVELOPMENT
ASSOCIATION
INC

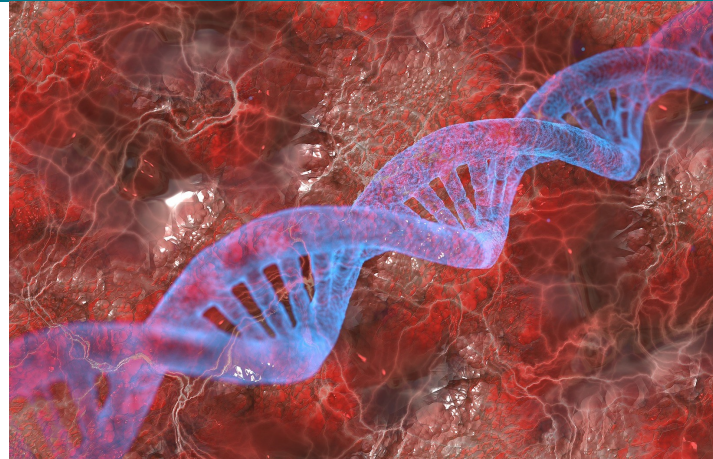


Epigenetics Settles the Debate ~ Not Set in Stone

~ Practice Wisdom for Child and Family Workers

Epigenetics can provide us with an insight into who we are and how we behave.

In the last 10 years, epigenetics has assisted many people to work in a far more targeted way with clients. It is especially helpful when we work with children and their families. Find out why this aspect of science is so relevant to your work.



This presentation will expand the concept of epigenetics to explore the interconnecting areas of the physical, social, spiritual and political contexts of people's lives. We will look at how trauma affects all aspects of human existence, and conclude with an exploration of multi-faceted healing.

Facilitators: Mary Jo McVeigh and Lisa Gardiner

Mary Jo McVeigh is the founder and director of Cara House; 'a place for healing, discovery and growth' and CaraCare charity; both which support vulnerable children, young people and their families through trauma-specific counselling and human rights practices.

Lisa Gardiner has a background in psychology, mental health and trauma and over 30 years working in health and human services. Lisa specialises in working with service providers that work with vulnerable populations, early childhood trauma and disrupted attachment.

Date Thursday 14 November 2019

Time 9.30am - 4.00pm

Venue

Panthers Penrith Leagues Club,
123 Mulgoa Road, Penrith

Facilitator

Mary Jo McVeigh and
Lisa Gardiner

Cost

Members: \$198.00
Non-Members: \$231.00

Morning tea & lunch provided

Contact

LEAD (02) 9620 6172
info@leadpda.org.au

Event Code NP2003

Event Level

Introductory

AN INITIATIVE
FUNDED BY



NSW
GOVERNMENT

Family &
Community
Services

REGISTRATIONS
NOW OPEN!

➤ Register on our website www.leadpda.org.au